

# Production Times

**UF** UNIVERSITY of FLORIDA  
IFAS Extension

Winter 2007  
Volume 14, Number 4

## Lelan Parker New Greenhouse Agent

◆ Production Times is brought to you by:

**Juanita Popenoe, Ph.D.**  
Lake County  
Woody Ornamentals/Multi-County  
(352) 343-4101

**Lelan Parker, M.S.**  
Orange County  
Greenhouse/Foliage Multi-County  
(407) 254-9200



Lelan Parker is the new Commercial Horticulture Agent for Nursery and Greenhouse Production for Orange, Lake and Seminole Counties. She is a native of Baton Rouge, Louisiana, receiving her B. S. degree at Southern University Agricultural & Mechanical College in Agriculture with a concentration in Plant Sciences. She attended Florida Agricultural and Mechanical University for graduate school and obtained a M. S. degree in Agricultural Sciences with a concentration in Plant Science/Viticulture-Biotechnology in April of this year. Her thesis was entitled: "Pedigree Analysis of 'Cynthiana' and 'Norton' Grape by DNA Microsatellite Markers".

Some of her highest achievements include maintaining Dean's List status for both uni-

versities attended, 2002-2003 Collegiate All American Scholar, and 2006 Florida A&M University, College of Engineering Sciences, Technology, and Agriculture Most Outstanding Graduate Student Leadership Award just to name a few. She has authored and co-authored publications in the Florida State Horticultural Society Proceedings and Journal International des Sciences de la

*(Continued on page 4)*

This material is provided as one of the many services relating to the educational programs offered to you by this agency. Our statewide network of specialists is prepared to provide current information on agriculture, marketing, family and consumer sciences, 4-H, marine science, and related fields. We will be happy to help you with additional information upon request.

Use of trade names in this newsletter does not reflect endorsement of the product by the University of Florida, Institute of Food and Agricultural Sciences, or the Florida Cooperative Extension Service.

**Whitefly Alert**—if you find whiteflies on a shipment, pay attention to the whitefly control program at <http://mrec.ifas.ufl.edu/LSO/bemisia/bemisia.htm> and let extension know where they are coming from. Resistant whiteflies have recently been found on hibiscus and poinsettia coming from some major propagators. They are not so much of a problem up north where they can be killed off in the winter, but down south here, all year long is great.



# Palm Disease Update

By Monica Elliot

It has been a busy year at the Fort Lauderdale Research and Education Center for palm diseases. We have observed one new disease in Florida, expansion of the geographic range within Florida for another disease, and expansion of the palm host range for two more diseases.

First, if you have not been to the FLREC web site in awhile, it has been updated (<http://flrec.ifas.ufl.edu/>). On the left side of the front page is listed the various specialties of the Center, including "Plant Pathology." Links to EDIS publications on palm diseases can be found here, as well as any updates that have not yet been placed into EDIS format (such as those below).

The first new update concerns palm diseases caused by phytoplasmas. The geographic range of Lethal Yellowing (LY) has expanded northward, and a phytoplasma disease called Texas Phoenix palm decline (TPD) has finally arrived

on Florida shores. The photo at left is *Phoenix sylvestris* exhibiting symptoms of Texas Phoenix palm decline. Note there are more dead lower leaves than would be normal for a healthy palm. Also, the spear leaf



(youngest leaf that has not unfolded) is tan and not green. Information about LY and TPD are at: [http://flrec.ifas.ufl.edu/palm\\_prod/pdfs/Palm%20Diseases%20Caused%20by%20Phytoplasmas.pdf](http://flrec.ifas.ufl.edu/palm_prod/pdfs/Palm%20Diseases%20Caused%20by%20Phytoplasmas.pdf)

The second new update concerns the "new" queen palm disease, which I am tentatively calling "Fusarium Decline" as *Fusarium oxysporum* appears to be the pathogen. More importantly, the host range appears to be expanding as Mexican fan palms (*Washingtonia robusta*) in three geographically distinct counties have developed this disease. Information about "Fusarium Decline of Queen Palms and Mexican Fan Palms in Florida" is at:

[http://flrec.ifas.ufl.edu/palm\\_prod/pdfs/New-Disease-Queen-Palms-Mexican-Fan-Palms-July.pdf](http://flrec.ifas.ufl.edu/palm_prod/pdfs/New-Disease-Queen-Palms-Mexican-Fan-Palms-July.pdf)



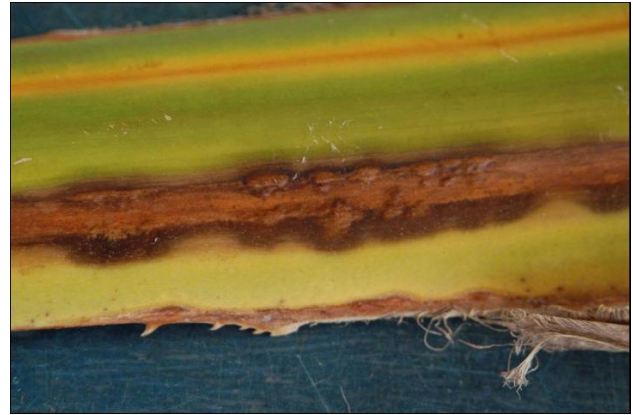
Above, Queen palm with Fusarium in which all leaves have died in show above. Note that palm looks "freeze dried in place."

Next page, a Mexican fan palm with Fusarium. Note the brown stripe on the petiole of the affected leaves.

(Continued on page 3)



(Continued from page 2)



Finally, the list of palms affected by Petiole (Rachis) Blight, specifically those caused by the fungus *Serenomyces*, continues to expand, with a *Thrinax* species recently added to the list. (see <http://edis.ifas.ufl.edu/PP145> for more details). To the right is the petiole and a leaf of a Mexican fan palm with Petiole Blight. This looks similar to *Fusarium*, but only affects individual leaves, and rarely kills the palm, but will move up through the canopy from oldest to

younger leaves if not controlled. The damage to the leaf is caused by the death of the water conducting elements in the petiole. A pathologist needs to determine which pathogen is causing the damage.



## Websites to Check Out

- Find out about the latest Entomology and Nematology publications for sale at: <http://pests.ifas.ufl.edu/forsale/> . They have CD Rom databases of beneficial and pest arthropods of Southeastern US Woody Ornamentals and many more.
- A "Best of the Bugs" list of websites is available at <http://pests.ifas.ufl.edu/bestbugs/>. The sites listed here are judged to be in the top 5% of insect- or nematode-related WWW sites by a committee of professional entomologists and nematologists.
- Are you a member of the Florida State Horticulture Society? You may want to join to share information about Florida's unique horticulture.. Their newsletter can be seen at <http://www.fshs.org/Newsletters/FSHS%20sept%2007%20final.pdf> .
- Remember our website <http://cfextension.ifas.ufl.edu>. We have production guides with key plants/key pests (color photos included), plant clinic results (photos and diagnoses), a calendar of local events, and much more.

---

*(Continued from page 1)*

Vigne et du Vin.

In her spare time she enjoys traveling, reading, spending time with friends and family and learning more about plants. She is happy to be aboard

the U.F./IFAS extension team and looks forward to meeting growers and exploring the exciting world of extension!

---

**Plant Clinic Problem of the Month** - Erwinia soft rot is caused by bacteria that are spread on contaminated tools, soil, workers and in water. The water-soaked spots on the leaves usually have a rotten fishy smell to them and will enlarge to rot the whole plant. It is especially bad during warm humid conditions of summer or in poorly ventilated greenhouses in the winter. Infected plants and symptomatic leaves should be removed at once. Tools and benches between plantings should be cleaned with surface disinfectants like bleach or quaternary ammonium compounds. Lower humidity levels by increasing ventilation and spacing between plants and reducing watering. Copper containing fungicides may help to reduce the spread of the bacteria, but cannot cure infected plants.



---

## 2007 Planning Calendar

---

Links to most programs and agendas may be found at: <http://cfextension.ifas.ufl.edu> or the UF Extension Calendar at <http://calendar.ifas.ufl.edu/calendar/index.htm>

### October

**16**—Employee Verification Program, Tavares. 9-11 am. Contact Maggie Jarrell (352) 343-4101.

**24**—Farm Safety Day, Tavares. 9 am. Contact Maggie Jarrell (352) 343-4101.

**28 - 31**—International Plant Propagators' Society Southern Region Annual Meeting Chattanooga, TN. <http://www.ipps.org/southernna/index.htm>

### November

**8**—Pesticide Applicator CEU Day, Kissimmee. Contact Jennifer Welshans (321) 697-3000.

**27**—Nursery and Landscape IPM Scout Training, MREC Apopka. Contact Yamira Donato (407) 254-9200..

**29, 30**—Great Southern Tree Conference. <http://www.fngla.org/gstree/gen-info.asp>

### December

**4, 11**—Nursery and Landscape IPM Scout Training continued, MREC Apopka.

**11**—FAWN Update and Winter Weather Protection, Tavares. Contact Maggie Jarrell (352) 343-4101.

**12**—Private Applicator Review & Exam, Tavares. Contact Maggie Jarrell (352) 343-4101.